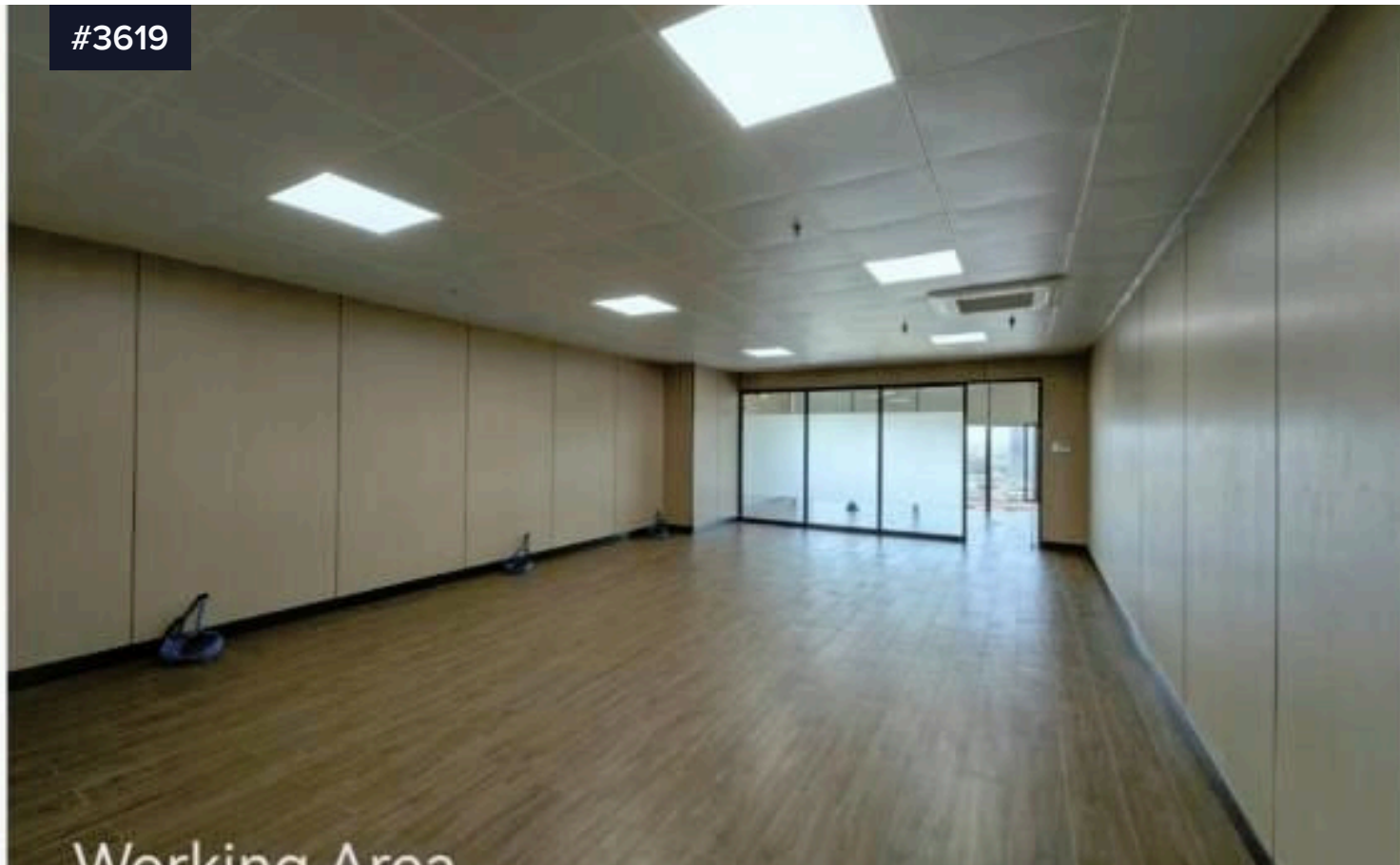


#3619



## ? MODERN 125.03 SQM FITTED OFFICE SPACE AT LEVERIZA PASAY FOR LEASE – PRIME LOCATION! ?

?205,000 /month

 Pasay, Metro Manila

Covered

 125.03 m<sup>2</sup>

Type

**Commercial Building**

### ? WHY CHOOSE THIS AREA?

?? PRIME LOCATION – Strategically situated between Makati CBD and the Bay Area, ensuring high accessibility and visibility.

? ? EXCELLENT CONNECTIVITY – Near LRT-1 Gil Puyat, major highways, and transport hubs, ideal for employees and clients.

? ?? CLASS A BUILDING – A Grade A office tower equipped with



**REB DORIE PIZARRA**

 (+63) 09177001671

 latheoz9@gmail.com

